

BOND UPDATE

December 2023

#ThankYouVoters

The background of the image shows several wooden blocks, likely from a Japanese wooden toy set like Hama Yaki. These blocks are arranged on a dark surface. Some blocks feature intricate, raised patterns, including concentric circles and geometric shapes. The lighting is warm, highlighting the natural grain of the wood. The text '2019 BOND CONSTRUCTION UPDATE' is superimposed in the center in a bold, white, sans-serif font.

2019 BOND CONSTRUCTION UPDATE

- **Waller Junior High Renovations and Additions**
 - Renovation in progress and steel erection complete for Phase 2 addition.
- **Holleman Elementary Renovations**
 - New emergency generator has been installed. Project complete
- **Priority 1 Projects**
 - Fields Store ES chillers - Contract approved and equipment ordered.
 - Emergency generators plans and specifications are being finalized.

WALLER JUNIOR HIGH

PHASE 1 COMPLETION SUMMER 2023

PHASE 2 COMPLETION SUMMER 2024



WALLER JUNIOR HIGH

- Drymalla Construction is working on Phase 1 punch list items. 85% complete.
- Phase 2 structural steel erection and bar joist are complete.
- Metal roof decking and steel detailing are in progress.
- Roofing is scheduled to start in January.
- New stage front apron extension has started in the auditorium
- Overhead electrical, HVAC, and plumbing are 95% complete in renovation areas.
- Metal stud framing and sheetrock walls are 75% complete in renovation areas.
- Exterior window frames are installed on north elevation.
- Interior window frames are scheduled for December installation.

WALLER JUNIOR HIGH

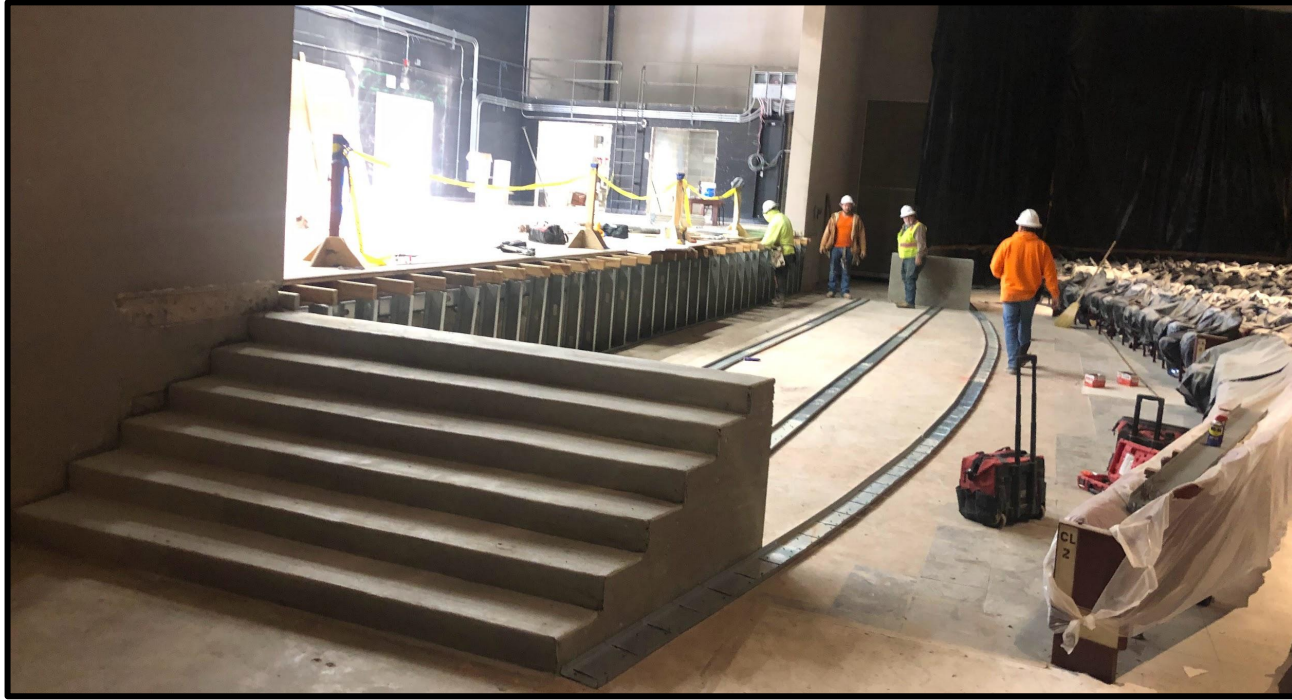


Phase 2
Steel Erection

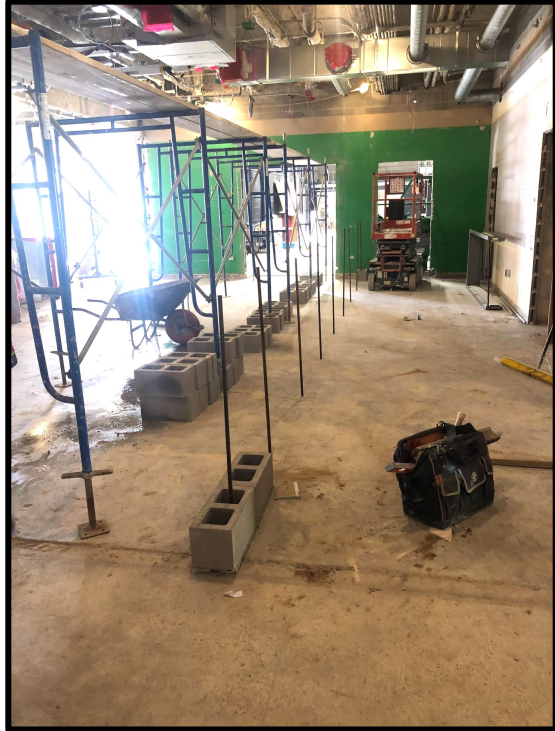
WALLER JUNIOR HIGH



MEP Rough-In



Auditorium Stage Extension



CMU and Metal Stud Walls

WALLER JUNIOR HIGH



Collaboration Area

An architectural rendering of a modern school building interior. The scene features a large, multi-level atrium with a prominent wide staircase in the center. People, including students and adults, are shown walking on the stairs and on the ground floor, which has a tiled floor. The building has large glass windows and a clean, minimalist design. The entire image is overlaid with a semi-transparent reddish-pink filter.

2022 BOND CONSTRUCTION UPDATE

- **Lowe Elementary (#6) & McReavy Elementary (#7)**
 - Interior CMU walls are nearing completion and installation of the brick veneer has commenced.
 - MEP install is in progress.
 - Roofing installation has commenced with metal panel installation ongoing.
 - On schedule for August 2024 school openings.
- **Elementary #8**
 - Construction documents were issued and proposals received in December 2024.
 - Final GMP to Board in January 2024.
- **Agricultural Science Center**
 - Construction documents contract to be awarded in December.
 - Construction is scheduled for December 2023 start and December 2024 completion.
- **Education Service Center (ESC)**
 - Construction documents are nearing completion.
 - Site construction is scheduled to start in January 2024.
 - Final GMP to Board in February 2024.

- **Schultz Junior High Priority 1 - Improvements**
 - Bleacher installation to be completed during the holiday break.
 - Graphics package installation has begun with 95% complete by the end of the holiday break.
- **Priority 1 - Improvements**
 - Turlington Elementary Driveway is complete.
 - Selection of Construction Manager (CMAR) was approved in November
 - Project scopes are being review with the architects, engineers, and construction manager.

- Standing-seam metal roof will begin in December.
- Exterior waterproofing is ongoing.
- Brick is onsite and installation has commenced in Area E.
- CMU masonry walls are complete.
- Metal stud wall framing is nearing completion.
- MEP equipment and rough-ins are in progress.
- Fire sprinkler installation is nearing completion.
- Air handler units are installed at mechanical mezzanines.

LOWE ELEMENTARY - #6

DELLROSE





Site Aerial

LOWE ELEMENTARY



Roof Underlayment is complete
Metal Panels to start this month.

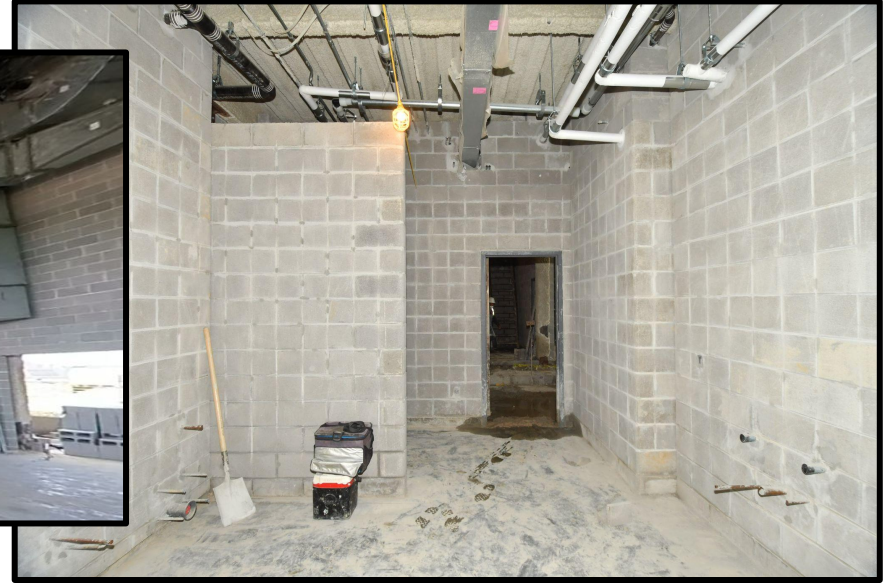
LOWE ELEMENTARY



Brick Veneer is Ongoing

WALLER ISD
CONSTRUCTION

LOWE ELEMENTARY



Interior CMU is complete.
Hollow Metal Frame install is ongoing.



AHU's have been delivered and placed.



MEPT Rough-In is Ongoing

WALLER ISD
CONSTRUCTION

MCREAVY ELEMENTARY - #7

BRIDGELAND





Aerial Site Overview



View of Front Entry



Metal Panels at Roof



MEP Wall Rough ins are in progress

WALLER ISD
CONSTRUCTION



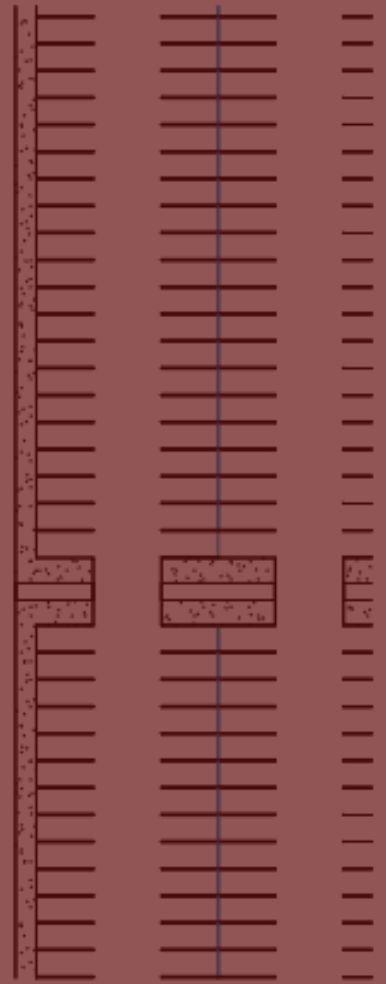
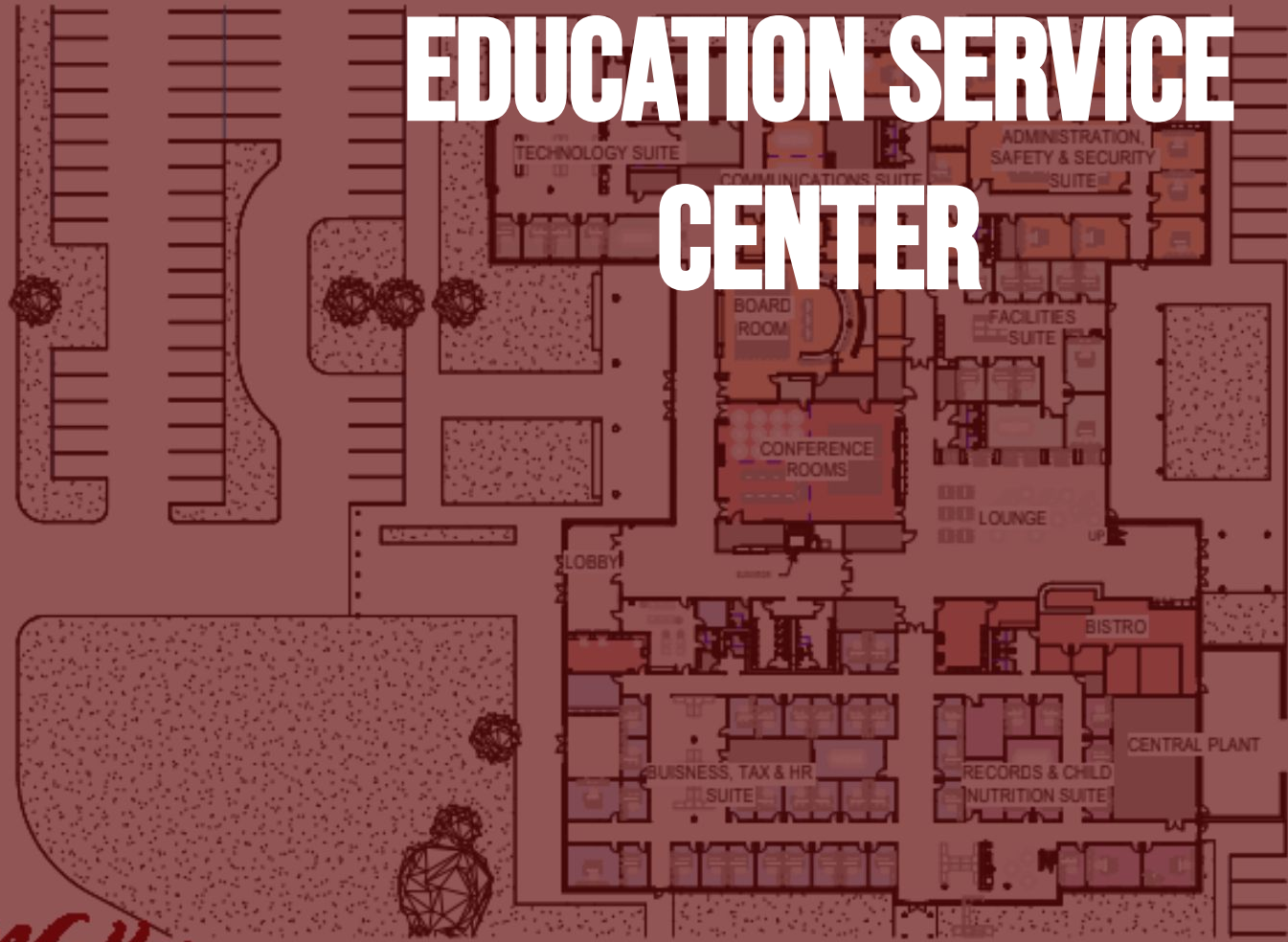
Drywall and Hydronic Piping in progress

WALLER ISD
CONSTRUCTION



Air Handlers are set at Mezzanines

EDUCATION SERVICE CENTER



- Construction documents are nearly complete.
- Stewart Builders is scheduled to take proposals (bids) for the GMP in January 2024 for February GMP approval.
- Sitework package is scheduled to start in January 2024.

WALLER ISD
BOND 22



Site Layout

WALLER ISD
CONSTRUCTION

AGRICULTURAL SCIENCE FACILITY

AG SCIENCE FACILITY
IMAGE - FRONT FACADE

- 100% construction documents were issued.
- Ag Facility and Site Package subcontractor bids received October 18th.
- Contract Amendment to be approved this month.
- Construction scheduled to start is December 2023.
- Completion anticipated for December 2024.

AGRICULTURAL FACILITY



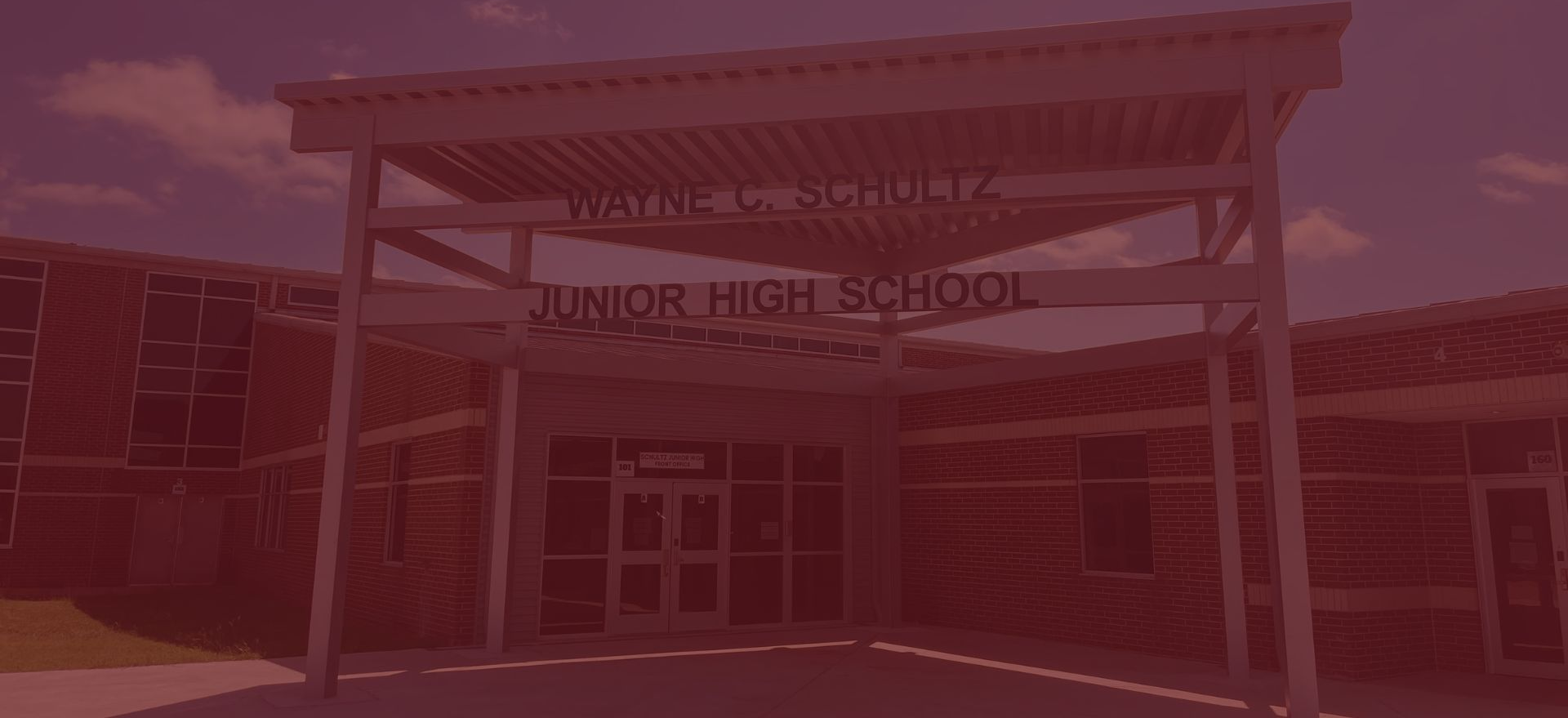
Overhead Rendering

AGRICULTURAL FACILITY



Front Elevation Rendering

SCHULTZ JUNIOR HIGH

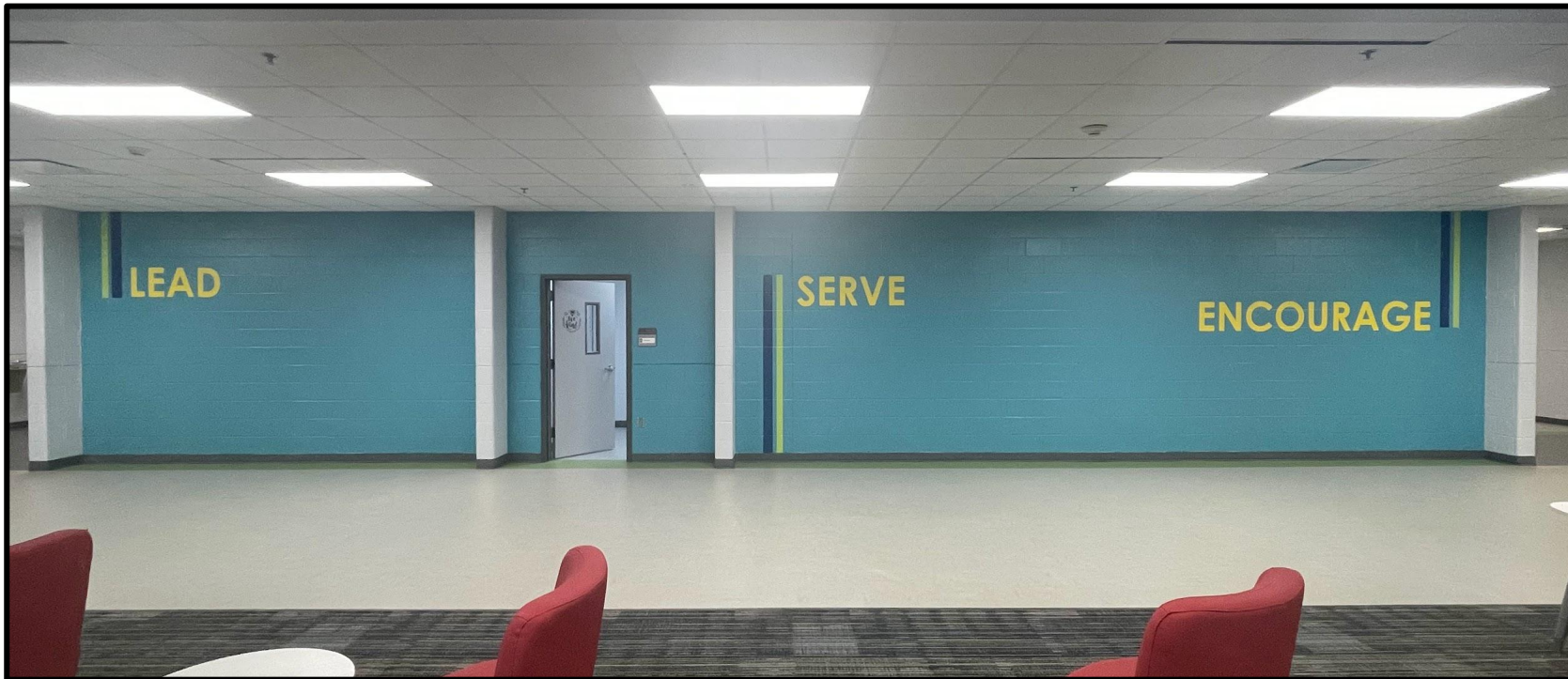


WAYNE C. SCHULTZ

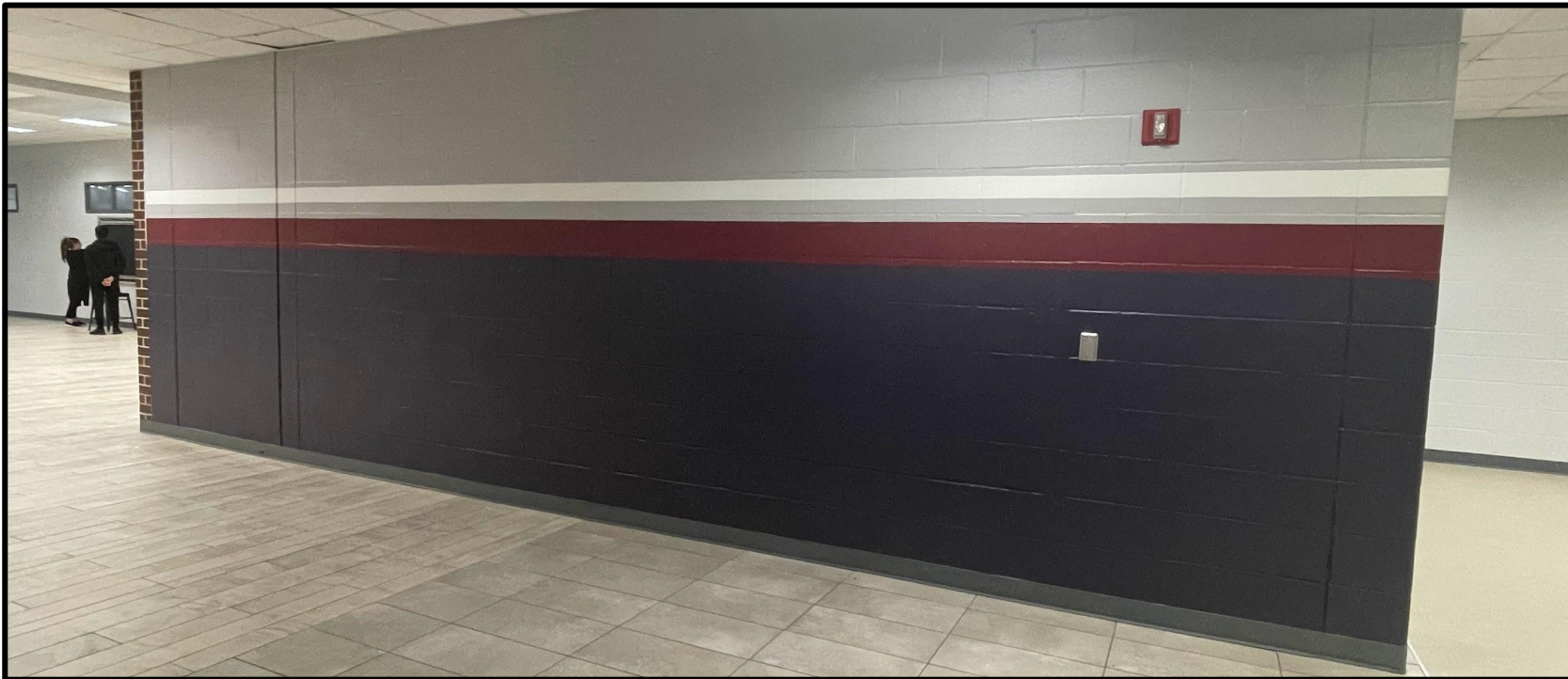
JUNIOR HIGH SCHOOL

- Graphics package installation is still ongoing.
- Cafeteria microwave stations have been installed.
- New PE/athletic lockers have been installed.
- New bleacher install & eastern bleacher demo is scheduled for the winter holiday break.

Schultz Junior High



Schultz Junior High



Schultz Junior High



Schultz Junior High



Schultz Junior High



Schultz Junior High



A photograph of a classroom filled with children of various ages, from young children to teenagers. They are all expressing excitement, with many having their arms raised in the air. The children are seated at small, light-colored tables with blue chairs. The classroom has white walls, a tiled ceiling, and various educational posters and supplies visible in the background. The entire image is overlaid with a semi-transparent red filter.

#ThankYouVoters

Waller
Independent School District